

ORGANIX LOUNGE

Design by Kris Van Puyvelde

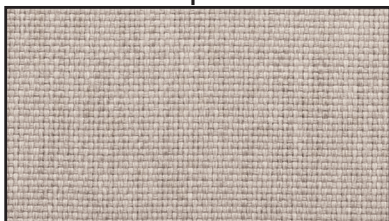


ORGANIX LOUNGE STANDARD FABRICS

ALL OTHER FABRICS & COLOURS AVAILABLE ON REQUEST PP. 408-413

CATEGORY A FABRICS FOR ORGANIX LOUNGE ARE ONLY AVAILABLE IN THE FOLLOWING COLOURS: CC, CHL, FL, RO, SL

NATURAL GREY DOT
REF: NGD - CAT. B



NATURAL SILVER DOT
REF: NSD - CAT. B



NATURAL LINEN DOT
REF: NLD - CAT. B



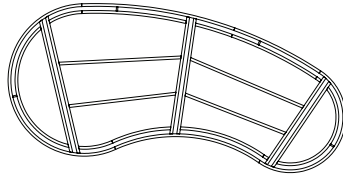
NATURAL WHITE DOT
REF: NWD - CAT. B



ORGANIX LOUNGE SPECIFICATIONS

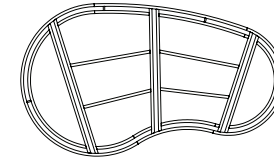
STANDARD / ON REQUEST

LOUNGE ELEMENT	
REF:	OGXL 01...
WEIGHT:	11,3 kg / 24,9 Lbs
INFO:	ASSEMBLING NEEDED



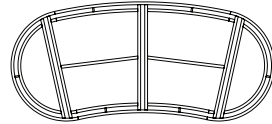
COATED ALUMINIUM		
WR	PB	A
OGXL01 WR	OGXL01 PB	OGXL01 A
•	•	•

LOUNGE ELEMENT	
REF:	OGXL 02...
WEIGHT:	9,6 kg / 21,1 Lbs
INFO:	ASSEMBLING NEEDED



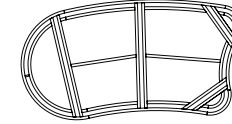
COATED ALUMINIUM		
WR	PB	A
OGXL02 WR	OGXL02 PB	OGXL02 A
•	•	•

LOUNGE ELEMENT	
REF:	OGXL 03...
WEIGHT:	8 kg / 17,6 Lbs
INFO:	ASSEMBLING NEEDED



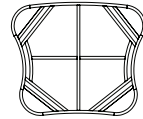
COATED ALUMINIUM		
WR	PB	A
OGXL03 WR	OGXL03 PB	OGXL03 A
•	•	•

LOUNGE ELEMENT	
REF:	OGXL 04...
WEIGHT:	7,6 kg / 16,7 Lbs
INFO:	ASSEMBLING NEEDED



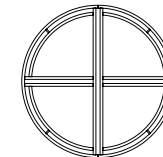
COATED ALUMINIUM		
WR	PB	A
OGXL04 WR	OGXL04 PB	OGXL04 A
•	•	•

LOUNGE ELEMENT	
REF:	OGXL 05...
WEIGHT:	5 kg / 11 Lbs
INFO:	ASSEMBLING NEEDED



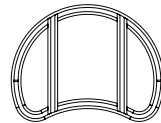
COATED ALUMINIUM		
WR	PB	A
OGXL05 WR	OGXL05 PB	OGXL05 A
•	•	•

LOUNGE ELEMENT	
REF:	OGXL 06...
WEIGHT:	6,2 kg / 13,6 Lbs
INFO:	ASSEMBLING NEEDED



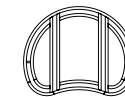
COATED ALUMINIUM		
WR	PB	A
OGXL06 WR	OGXL06 PB	OGXL06 A
•	•	•

LOUNGE ELEMENT	
REF:	OGXL 07...
WEIGHT:	5,2 kg / 11,4 Lbs
INFO:	ASSEMBLING NEEDED



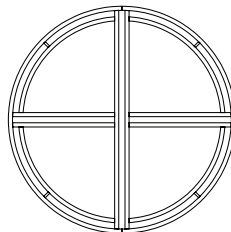
COATED ALUMINIUM		
WR	PB	A
OGXL07 WR	OGXL07 PB	OGXL07 A
•	•	•

LOUNGE ELEMENT	
REF:	OGXL 08...
WEIGHT:	4,1 kg / 9 Lbs
INFO:	ASSEMBLING NEEDED



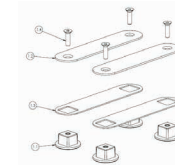
COATED ALUMINIUM		
WR	PB	A
OGXL08 WR	OGXL08 PB	OGXL08 A
•	•	•

LOUNGE ELEMENT	
REF:	OGXL 09...
WEIGHT:	14,5 kg / 32 Lbs
INFO:	ASSEMBLING NEEDED



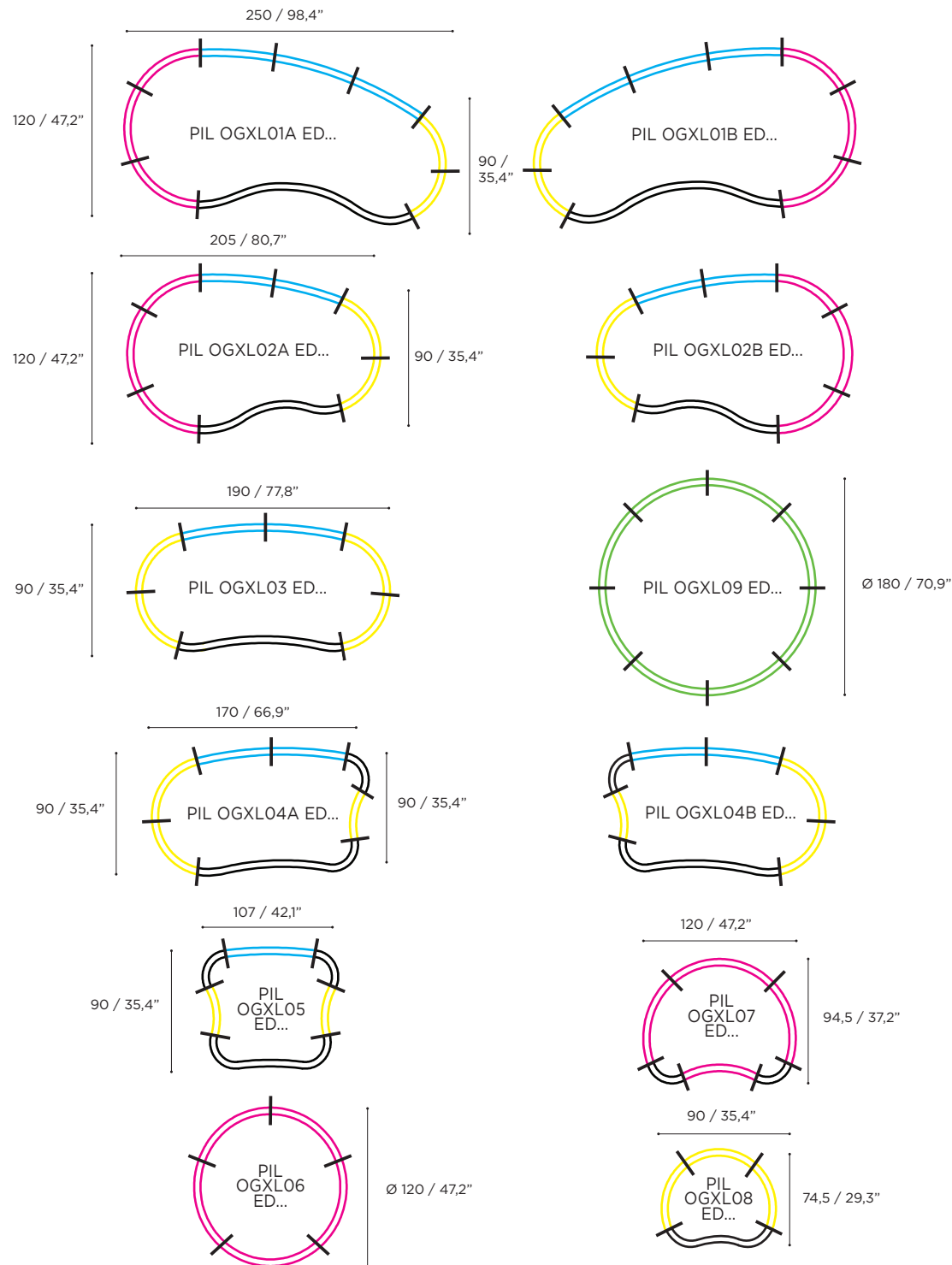
COATED ALUMINIUM		
WR	PB	A
OGXL09 WR	OGXL09 PB	OGXL09 A
•	•	•

LOUNGE ELEMENT CONNECTOR SET	
REF:	OGXL CONNECTSET
INFO:	CONNECTS 2 ELEMENTS



COATED ALUMINIUM		
WR	PB	A
OGXL CONNECTSET WR		
•		
	PB	
	OGXL CONNECTSET PB	
	•	
	A	
	OGXL CONNECTSET A	
	•	

ORGANIX LOUNGE SPECIFICATIONS



SEAT CUSHIONS		
SEAT 120 x 250		
	PIL OGXL01A ED...	PIL OGXL01B ED...
STAND.	•	•
CAT. A	•	•
CAT. B	•	•
CAT. C	•	•
SEAT 120 x 205		
	PIL OGXL02A ED...	PIL OGXL02B ED...
STAND.	•	•
CAT. A	•	•
CAT. B	•	•
CAT. C	•	•
SEAT 90 x 190		
	PIL OGXL03 ED...	
STAND.	•	
CAT. A	•	
CAT. B	•	
CAT. C	•	
SEAT 90 x 170		
	PIL OGXL04A ED...	PIL OGXL04B ED...
STAND.	•	•
CAT. A	•	•
CAT. B	•	•
CAT. C	•	•
SEAT 90 x 107		
	PIL OGXL05 ED...	
STAND.	•	
CAT. A	•	
CAT. B	•	
CAT. C	•	
SEAT Ø 120		
	PIL OGXL06 ED...	
STAND.	•	
CAT. A	•	
CAT. B	•	
CAT. C	•	
SEAT 94,5 x 120		
	PIL OGXL07 ED...	
STAND.	•	
CAT. A	•	
CAT. B	•	
CAT. C	•	
SEAT 74,5 x 90		
	PIL OGXL08 ED...	
STAND.	•	
CAT. A	•	
CAT. B	•	
CAT. C	•	
SEAT Ø180		
	PIL OGXL09 ED...	
STAND.	•	
CAT. A	•	
CAT. B	•	
CAT. C	•	

ORGANIX LOUNGE SPECIFICATIONS

STANDARD / ON REQUEST

BACK CUSHIONS				
	BACK 18 x 71	BACK 18 x 70	BACK 18 x 62	BACK 18 x 78
	PIL OGXL450 ED...	PIL OGXL600 ED...	PIL OGXL3000 ED...	PIL OGXL900 ED...
STAND.	•	•	•	•
CAT. A	•	•	•	•
CAT. B	•	•	•	•
CAT. C	•	•	•	•

COMFORT BACK CUSHION	
BACK 60 x 40	
	PIL BRH 6040P...
STAND.	•
CAT. A	•
CAT. B	•
CAT. C	•

RADIUS 45 / 17,7"
PIL OGXL450 ED...



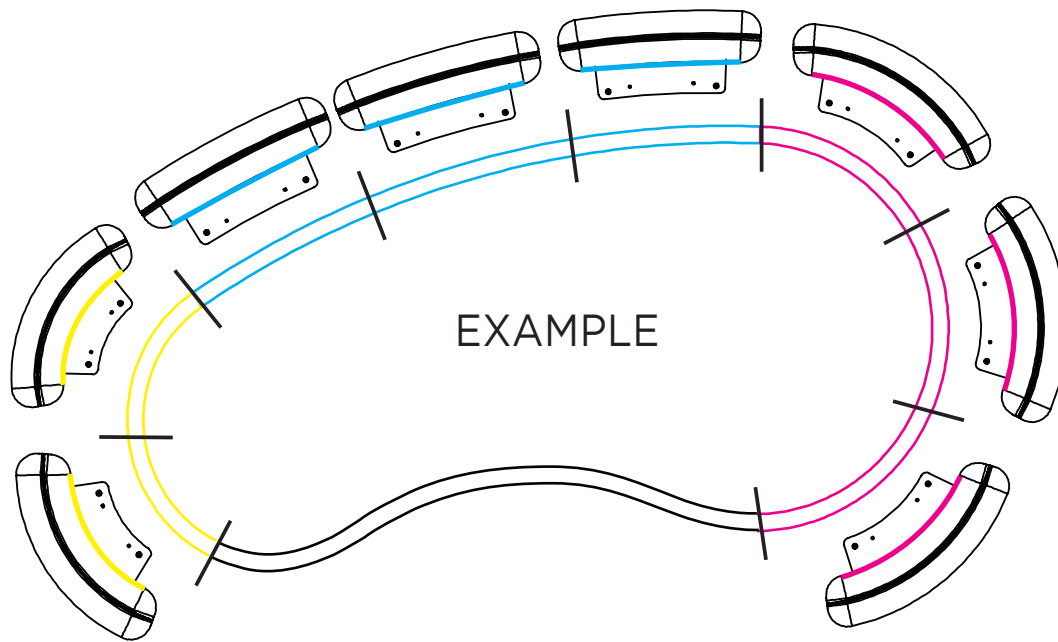
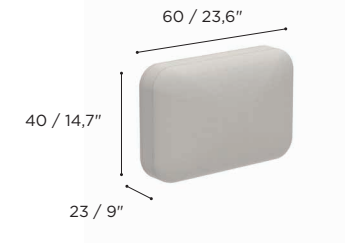
RADIUS 60 / 23,6"
PIL OGXL600 ED...



RADIUS 300 / 118,1"
PIL OGXL3000 ED...

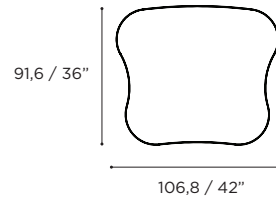


RADIUS 90 / 35,5"
PIL OGXL900 ED...



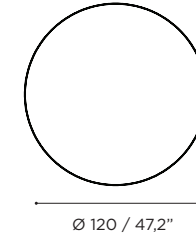
ORGANIX LOUNGE SPECIFICATIONS

TABLE TOP	
REF:	OGXL 05 TOP...
WEIGHT:	24,4 kg / 53,7 Lbs



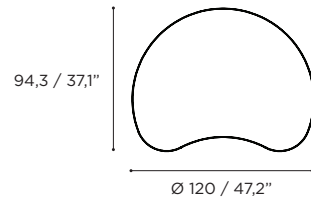
ORGANIX LOUNGE TABLE TOP	
WUM	OGXL05 TOP45 CWUM
BS	OGXL05 TOP45 CBS
CD	OGXL05 TOP45 CCD
TR	OGXL05 TOP45 CTR
CL	OGXL05 TOP45 CCL
TS	OGXL05 TOP45 CTS
TM	OGXL05 TOP45 CTM
NM	OGXL05 TOP45 CNM
ZUM	OGXL05 TOP45 CZUM

TABLE TOP	
REF:	120R45 CERAM...
WEIGHT:	32,6 kg / 71,8 Lbs



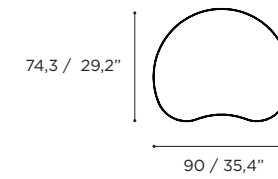
ORGANIX LOUNGE TABLE TOP	
WUM	120R45 CERAM WUM
BS	120R45 CERAM BS
CD	120R45 CERAM CD
TR	120R45 CERAM TR
CL	120R45 CERAM CL
TS	120R45 CERAM TS
TM	120R45 CERAM TM
NM	120R45 CERAM NM
ZUM	120R45 CERAM ZUM

TABLE TOP	
REF:	OGXL 07 TOP...
WEIGHT:	26,2 kg / 57,7 Lbs



ORGANIX LOUNGE TABLE TOP	
WUM	OGXL07 TOP45 CWUM
BS	OGXL07 TOP45 CBS
CD	OGXL07 TOP45 CCD
TR	OGXL07 TOP45 CTR
CL	OGXL07 TOP45 CCL
TS	OGXL07 TOP45 CTS
TM	OGXL07 TOP45 CTM
NM	OGXL07 TOP45 CNM
ZUM	OGXL07 TOP45 CZUM

TABLE TOP	
REF:	OGXL 08 TOP...
WEIGHT:	15,7 kg / 34,6 Lbs

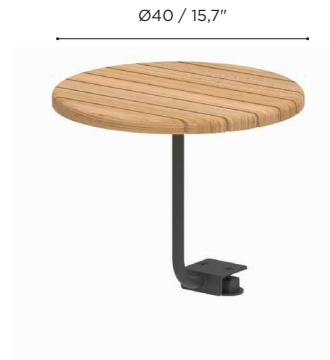


ORGANIX LOUNGE TABLE TOP	
WUM	OGXL08 TOP45 CWUM
BS	OGXL08 TOP45 CBS
CD	OGXL08 TOP45 CCD
TR	OGXL08 TOP45 CTR
CL	OGXL08 TOP45 CCL
TS	OGXL08 TOP45 CTS
TM	OGXL08 TOP45 CTM
NM	OGXL08 TOP45 CNM
ZUM	OGXL08 TOP45 CZUM

ORGANIX LOUNGE SPECIFICATIONS

STANDARD / ON REQUEST

SIDE TABLE ATTACHMENT	
REF:	OGXL ST040..
WEIGHT:	5,5 kg / 12,1 Lbs
INFO:	ASSEMBLING NEEDED ATTACHES TO FRAME



		ORGANIX LOUNGE SIDE TABLE			
		COATED STAINLESS STEEL			
		WR	PB	A	
CERAMIC	WUM	OGXL ST040 CWRWUM	OGXL ST040 CPBWUM	OGXL ST040 CAWUM	
	BS	OGXL ST040 CWRBS	OGXL ST040 CPBBS	OGXL ST040 CABS	
	CD	OGXL ST040 CWRCD	OGXL ST040 CPBCD	OGXL ST040 CACD	
	TR	OGXL ST040 CWRTR	OGXL ST040 CPBTR	OGXL ST040 CATR	
	CL	OGXL ST040 CWRCL	OGXL ST040 CPBCL	OGXL ST040 CACL	
	TS	OGXL ST040 CWRTS	OGXL ST040 CPBTS	OGXL ST040 CATS	
	TM	OGXL ST040 CWRTM	OGXL ST040 CPBTM	OGXL ST040 CATM	
	NM	OGXL ST040 CWRNM	OGXL ST040 CPBNM	OGXL ST040 CANM	
	ZUM	OGXL ST040 CWRZUM	OGXL ST040 CPBZUM	OGXL ST040 CAZUM	
	TEAK	W	OGXL ST040 WWR	OGXL ST040 WPB	OGXL ST040 WA
		MO	OGXL ST040 VWRMO	OGXL ST040 VPBMO	OGXL ST040 VAMO
	ENAMELED LAVA STONE	DU	OGXL ST040 VWRDU	OGXL ST040 VPBDU	OGXL ST040 VADU
LA		OGXL ST040 VWRLA	OGXL ST040 VPBLA	OGXL ST040 VALA	
JA		OGXL ST040 VWRJA	OGXL ST040 VPBJA	OGXL ST040 VAJA	
PE		OGXL ST040 VWRPE	OGXL ST040 VPBPE	OGXL ST040 VAPE	
SL		OGXL ST040 VWRSL	OGXL ST040 VPBSL	OGXL ST040 VASL	

ORGANIX LOUNGE SETS

SET 01	
REF:	OGXL SET 01
INCLUDED:	
1 x	OGXL 02 A
1 x	PIL OGXL 02A (STANDARD CAT.)
2 x	PIL OGXL 3000 (STANDARD CAT.)
2 x	PIL OGXL 600 (STANDARD CAT.)
2 x	PIL BRH 6040P (STANDARD CAT.)
PRICE FOR ANTHRACITE COATED ALUMINIUM FRAME AND STANDARD CUSHIONS	
DECO CUSHIONS NOT INCLUDED!	



OGXL SET 01

SET 02	
REF:	OGXL SET 02
INCLUDED:	
1 x	OGXL 06 A + 120R45 CERAM CL
2 x	OGXL 02 A
2 x	PIL OGXL 02A (STANDARD CAT.)
4 x	PIL OGXL 3000 (STANDARD CAT.)
4 x	PIL OGXL 600 (STANDARD CAT.)
6 x	PIL BRH 6040P (STANDARD CAT.)
PRICE FOR ANTHRACITE COATED ALUMINIUM FRAME AND STANDARD CUSHIONS	
DECO CUSHIONS NOT INCLUDED!	



OGXL SET 02

SET 03	
REF:	OGXL SET 03
INCLUDED:	
1 x	OGXL 07 A + OGXL 07 TOP45 CCL
1 x	OGXL 01 A
1 x	OGXL 04 A
2 x	OGXL CONNECTSET A
1 x	PIL OGXL 01B (STANDARD CAT.)
1 x	PIL OGXL 04A (STANDARD CAT.)
5 x	PIL OGXL 3000 (STANDARD CAT.)
1 x	PIL OGXL 600 (STANDARD CAT.)
1 x	PIL OGXL 450 (STANDARD CAT.)
3 x	PIL BRH 6040P (STANDARD CAT.)
PRICE FOR ANTHRACITE COATED ALUMINIUM FRAME AND STANDARD CUSHIONS	
DECO CUSHIONS NOT INCLUDED!	



OGXL SET 03

ORGANIX LOUNGE SETS

STANDARD / ON REQUEST

SET 04	
REF:	OGXL SET 04
INCLUDED:	
1 x	OGXL 06 A + 120R45 CERAM CL
1 x	OGXL 07 A + OGXL 07 TOP45 CCL
1 x	OGXL 08 A + OGXL 08 TOP45 CCL
1 x	OGXL 01 A
1 x	OGXL 02 A
1 x	OGXL 03 A
1 x	OGXL 04 A
3 x	OGXL CONNECTSET A
1 x	PIL OGXL 01A (STANDARD CAT.)
1 x	PIL OGXL 04B (STANDARD CAT.)
1 x	PIL OGXL 02B (STANDARD CAT.)
1 x	PIL OGXL 03 (STANDARD CAT.)
7 x	PIL OGXL 3000 (STANDARD CAT.)
1 x	PIL OGXL 600 (STANDARD CAT.)
1 x	PIL OGXL 450 (STANDARD CAT.)
3 x	PIL BRH 6040P (STANDARD CAT.)
PRICE FOR ANTHRACITE COATED ALUMINIUM FRAME FRAME AND STANDARD CUSHIONS	
DECO CUSHIONS NOT INCLUDED!	



OGXL SET 04

SET 05	
REF:	OGXL SET 05
INCLUDED:	
1 x	OGXL 06 A + 120R45 CERAM CL
2 x	OGXL 07 A + OGXL 07 TOP45 CCL
1 x	OGXL 01 A
1 x	OGXL 02 A
1 x	OGXL 03 A
1 x	OGXL 04 A
1 x	OGXL 08 A
4 x	OGXL CONNECTSET A
1 x	PIL OGXL 01B (STANDARD CAT.)
1 x	PIL OGXL 04A (STANDARD CAT.)
1 x	PIL OGXL 03 (STANDARD CAT.)
1 x	PIL OGXL 08 (STANDARD CAT.)
1 x	PIL OGXL 02B (STANDARD CAT.)
7 x	PIL OGXL 3000 (STANDARD CAT.)
3 x	PIL OGXL 600 (STANDARD CAT.)
2 x	PIL OGXL 450 (STANDARD CAT.)
5 x	PIL BRH 6040P (STANDARD CAT.)
PRICE FOR ANTHRACITE COATED ALUMINIUM FRAME FRAME AND STANDARD CUSHIONS	
DECO CUSHIONS NOT INCLUDED!	



OGXL SET 05

ORGANIX LOUNGE SETS

SET 06	
REF:	OGXL SET 06
INCLUDED:	
1 x	OGXL ST040 CAZUM
1 x	OGXL 09 A
1 x	PIL OGXL 09 (STANDARD CAT.)
4 x	PIL OGXL 900 (STANDARD CAT.)
4 x	PIL BRH 6040P (STANDARD CAT.)
1 x	PLM 300 (STANDARD CAT.)
1 x	PLMV75
PRICE FOR ANTHRACITE COATED ALUMINIUM FRAME FRAME AND STANDARD CUSHIONS	
DECO CUSHIONS NOT INCLUDED!	



OGXL SET 06

SET 07	
REF:	OGXL SET 07
INCLUDED:	
1 x	OGXL 06 A + 120R45 CERAM CL
2 x	OGXL 07 A + OGXL 07 TOP45 CCL
1 x	OGXL 01 A
1 x	OGXL 03 A
1 x	OGXL 04 A
1 x	OGXL 09 A
3 x	OGXL CONNECTSET A
1 x	PIL OGXL 09 (STANDARD CAT.)
1 x	PIL OGXL 04A (STANDARD CAT.)
1 x	PIL OGXL 03 (STANDARD CAT.)
1 x	PIL OGXL 01B (STANDARD CAT.)
5 x	PIL OGXL 3000 (STANDARD CAT.)
4 x	PIL OGXL 900 (STANDARD CAT.)
1 x	PIL OGXL 600 (STANDARD CAT.)
2 x	PIL OGXL 450 (STANDARD CAT.)
9 x	PIL BRH 6040P (STANDARD CAT.)
PRICE FOR ANTHRACITE COATED ALUMINIUM FRAME FRAME AND STANDARD CUSHIONS	
DECO CUSHIONS NOT INCLUDED!	



OGXL SET 07

ORGANIX OUTDOOR COVERS

STANDARD / ON REQUEST

OUTDOOR COVERS SEAT CUSHIONS	
SEAT 120 x 253,6	
ODC OGXL01A	ODC OGXL01B
•	•
SEAT 120 x 200	
ODC OGXL02A	ODC OGXL02B
•	•
SEAT 96 x 200	
ODC OGXL03	
•	
SEAT 95,3 x 170,1	
ODC OGXL04A	ODC OGXL04B
•	•
SEAT 91,6 x 106,8	
ODC OGXL05	
•	
SEAT Ø 120	
ODC OGXL06	
•	
SEAT 94,3 x 120	
ODC OGXL07	
•	
SEAT 74,3 x 90	
ODC OGXL08	
•	
SEAT Ø 180	
ODC OGXL09	
•	

OUTDOOR COVERS BACK CUSHIONS			
SINGLE BACK	SINGLE BACK	SINGLE BACK	SINGLE BACK
ODC OGXL450 X1	ODC OGXL600 X1	ODC OGXL3000 X1	ODC OGXL900 X1
•	•	•	•
DOUBLE BACK	DOUBLE BACK	DOUBLE BACK	DOUBLE BACK
ODC OGXL450 X2	ODC OGXL600 X2	ODC OGXL3000 X2	ODC OGXL900 X2
•	•	•	•
	TRIPLE BACK	TRIPLE BACK	TRIPLE BACK
	ODC OGXL600 X3	ODC OGXL3000 X3	ODC OGXL900 X3
	•	•	•
			QUADRUPLE BACK
			ODC OGXL900 X4
			•

OUTDOOR COVERS TABLES
91,6 x 106,8
ODC OGXL05 TABLE
•
Ø 120
ODC OGXL06 TABLE
•
94,3 x 120
ODC OGXL07 TABLE
•
74,3 x 90
ODC OGXL08 TABLE
•



THE PRICE OF A COMPLETE CUSTOM OUTDOOR COVER CAN BE CALCULATED BY ADDING UP ALL THE ELEMENTS IN YOUR SET-UP.

PICTURED EXAMPLE:

- TRIPLE BACK (ODC OGXL3000 X3)
- +
- SINGLE BACK (ODC OGXL600 X1)
- +
- SEAT 120 x 253,6 (ODC OGXL01B)
- =
-

CUSHIONS

OPEN-CELLED:

Open-celled cushion technology

Royal Botania cushions are 100% water and UV resistant.

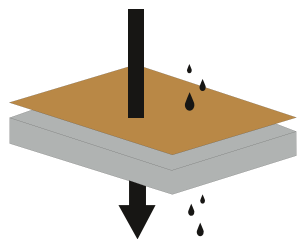
The foam has an open-celled structure, creating a high permeability level.

This means that when water gets in, it is easy for it to evaporate.

Your outdoor furniture cushions will dry very quickly after exposure to water or moisture.

During production of the foam, an anti-bacterial and anti-fungal treatment is applied.

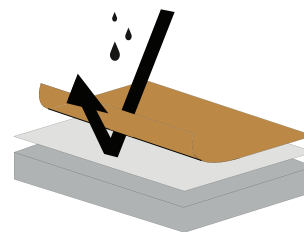
This is done without using CFC's, keeping the process environmentally friendly.



MEMBRANE:

Royal Botania cushions are created by laminating our membrane to high-performance textiles, then sealing them with an innovative solution for waterproof protection.

The Royal Botania membrane is the heart of all our cushions. The PTFE-layer contains over 9 billion microscopic pores per square inch. These pores are 20.000 times smaller than a water droplet, but 700 times larger than a water vapor molecule, which makes the Royal Botania membrane completely waterproof from the outside, while allowing perspiration to escape from the inside. The membrane consists of a MICRO-fiber, preventing the penetration of body oils, food or insect repellents that could otherwise penetrate the cushion.



PROTECTIVE COVERS

To protect your Royal Botania furniture from the elements when not used, we provide PU coated polyester covers for every element as well as for modular combinations. The latter are custom made to fit the lay-out of your lounge set.

The seams on those protective covers are sealed by silicone strips to prevent water from entering. Always make sure that the furniture and the cushions are completely dry before putting on the covers to avoid the formation of mould.

MAINTENANCE

Even the best of materials and components, will get dirty when placed outside. Even though our furniture is well protected against the elements, proper maintenance is a must. For that purpose we offer a wide array of maintenance products, all especially developed to make sure your furniture will stand out, even after many years outside. To select the right product for the right application, check our maintenance manual on www.royalbotania.com/maintenance

WARRANTY

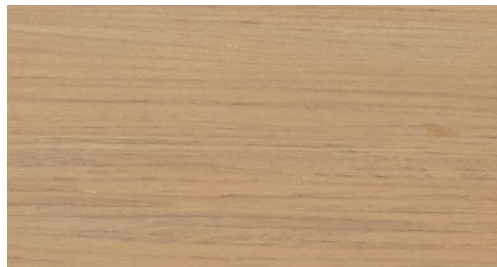
Royal Botania products are made from the finest materials, and with the utmost care, so as to give you a lifetime of enjoyment. That is when correctly used and properly maintained. Hidden flaws in materials can never be excluded for 100%. These can eventually cause issues. In the event of quality issues arising from such defects, Royal Botania obviously takes its responsibility. Our warranty clauses can be found on www.royalbotania.com/warranty

TEAK & MAHOGANY

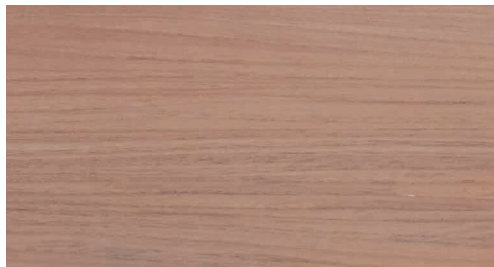
AS ROYAL BOTANIA NEVER COMPROMISES ON QUALITY, ONLY CAREFULLY SELECTED MATURE TEAKWOOD IS USED IN OUR PRODUCTS. ALL OF IT HARVESTED IN STRICT ACCORDANCE WITH OUR ENVIRONMENTAL POLICIES. TEAK WOOD'S RENOWNED DURABILITY IS DUE TO ITS HIGH CONTENT OF NATURAL OILS. THE LIMITED ABSORPTION OF MOISTURE PROTECTS THE WOOD FROM WARPING AND GIVES IT ENORMOUS STABILITY. IN ADDITION, TEAK IS HIGHLY RESISTANT TO ATTACKS BY PESTS. IT IS BECAUSE OF THESE QUALITIES, AS WELL AS ITS EXCEPTIONALLY ATTRACTIVE HUE AND STRUCTURE, THAT TEAK IS WIDELY CONSIDERED "THE NOBLEST OF ALL WOOD TYPES".

MAHOGANY IS A HARDWOOD WITH A REDDISH COLOUR THAT IS WIDELY USED FOR BOAT BUILDING, AS WELL AS FURNITURE MANUFACTURING.

TEAK
REF: W



OILED MAHOGANY
REF: MHOT



STAINLESS STEEL

STAINLESS STEEL IS A FERROUS ALLOY WITH INCREASED CORROSION RESISTANCE DUE TO THE ADDITION OF CHROME AND NICKEL. CHLORINE, THE GREATEST ENEMY OF STAINLESS STEEL, CAN CAUSE A TYPE OF CORROSION KNOWN AS "PITTING". FOR THIS REASON, IT IS RECOMMENDED THAT IN COASTAL LOCATIONS THE METAL BE GIVEN AN ELECTROPOLISHING TREATMENT, IN ORDER TO FURTHER INCREASE ITS RESISTANCE TO CORROSION. THE FURNITURE FRAMES OF THE WAVE IS SUPPLIED WITH AN ELECTROPOLISHED FINISH AS STANDARD.

FOR THE NINIX, O-ZON, QT & TABOELA RANGES WE RECOMMEND THE OPTIONAL ELECTROPOLISHING TREATMENT OF THE FRAME IF IT IS TO BE USED IN A CORROSIVE ENVIRONMENT.

BRUSHED STAINLESS STEEL
REF: SS

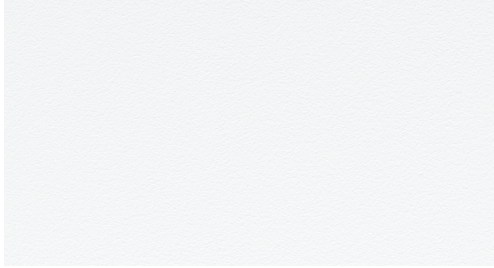


ELECTROPOLISHED STAINLESS STEEL
REF: EP

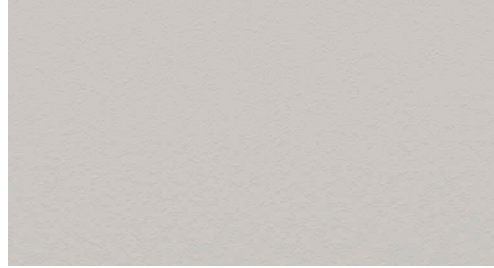


POWDER COATING COLOURS

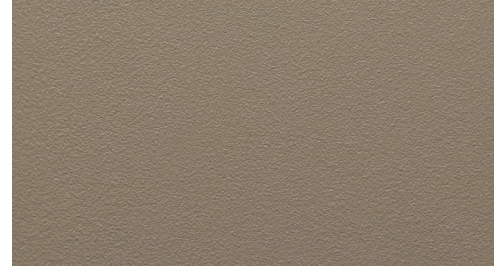
WHITE
REF: WR



PEBBLE
REF: PB



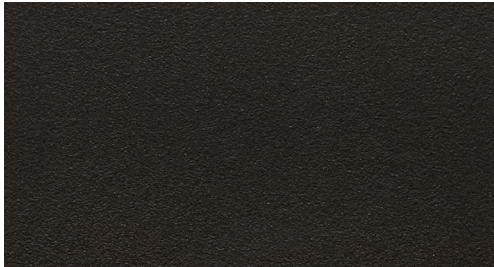
SAND
REF: S



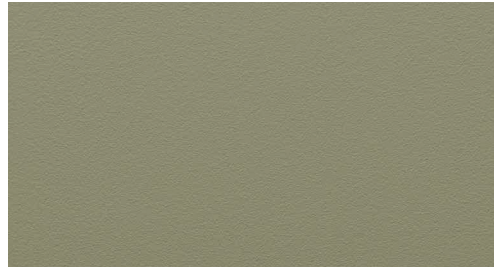
BRONZE
REF: BR



ANTHRACITE
REF: A



OLIVE
REF: OL



FIBER

OLEFIN FIBER IS A SYNTHETIC FIBER MADE FROM POLYPROPYLENE. THE ADVANTAGE OF THIS FIBER IS ITS STRENGTH, COLOUR FASTNESS AND COMFORT. ALSO IT IS VERY RESISTANT TO STAINING AND DIFFERENT WEATHER CONDITIONS.

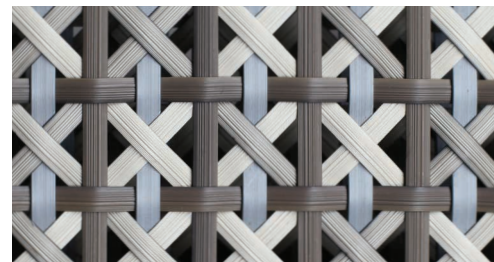
JIVE COLLECTION (OLEFIN FIBER)



SAMBA COLLECTION (OLEFIN FIBER)



CALYPSO COLLECTION (POLYTHYLENE FIBER)



FENSI COLLECTION



CERAMIC

THE CERAMIC TOPS ARE MADE FROM NATURAL CLAYS, SO SMALL COLOUR GRADATIONS CAN OCCUR. THIS MAKES EACH TABLE UNIQUE.

WHITE
REF: WUM



CEMENTO LUMINOSO
REF: CL



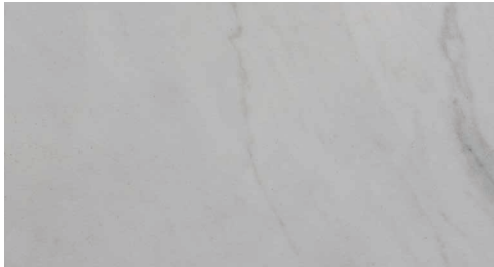
PEARL GREY
REF: PG



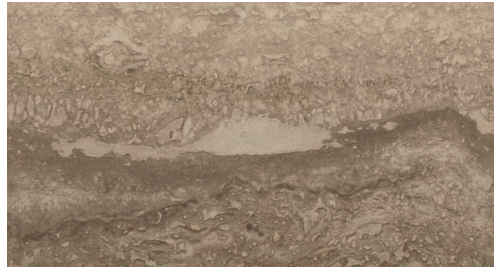
NERO MARQUINA
REF: NM



BIANCO STATUARIO
REF: BS



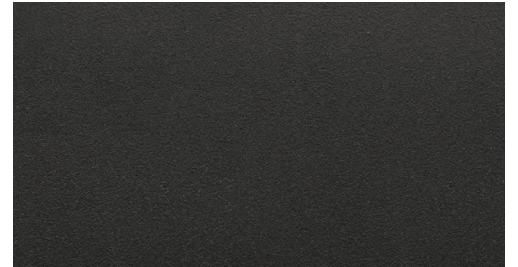
TRAVERTINO
REF: TR



TAUPE GREY
REF: TG



BLACK
REF: ZUM



CEPPO DOLOMITICA
REF: CD



TERRA SABBIA
REF: TS



TERRA MARRONE
REF: TM



CONCRETE

WE USE AN ULTRA-HIGH PERFORMANCE CONCRETE REINFORCED BY NATURAL MINERAL COMPONENTS AND ORGANIC FIBERS. THANKS TO ITS DISCONTINUOUS PORE STRUCTURE AND CRACK-BRIDGING FIBERS, IT IS VIRTUALLY IMPERVIOUS. PENETRATION OF CHLORIDE IONS IS ALSO SIGNIFICANTLY REDUCED AND THUS PERFORMS EXCEPTIONALLY WELL IN HIGHLY CORROSIVE ENVIRONMENTS SUCH AS NEAR BEACHES.

CEMENT GREY

REF: CG



ENAMELED LAVA STONES

LAVA STONES WITH A VITREOUS ENAMEL COATING. FUSED AT 850°C THE ENAMEL BECOMES VERY HARD AND EXTREMELY RESISTANT TO ALL WEATHER CONDITIONS.

PEARL

REF: PE



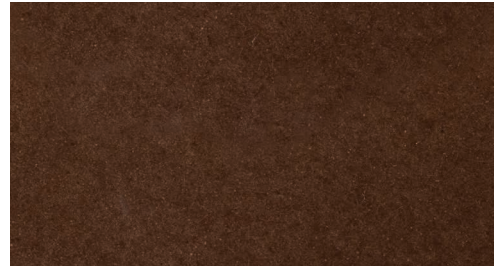
MOON

REF: MO



LAVA

REF: LA



SLATE

REF: SL



JADE

REF: JA



DUSK

REF: DU

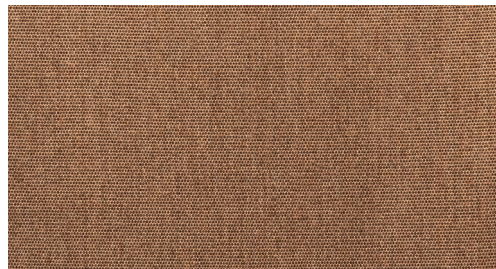


CATEGORY A FABRICS ACRYLIC

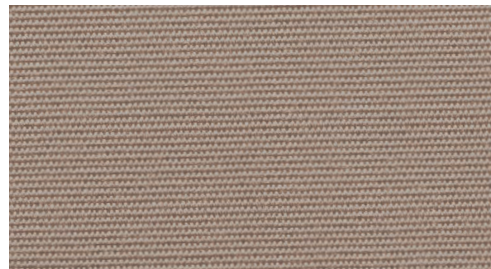
WHITE
REF: ...WU - CAT.: A - ACRYLIC



COCONUT
REF: ...CC - CAT.: A - ACRYLIC



CAPPUCCINO
REF: ...CAU - CAT.: A - ACRYLIC



ROCK
REF: ...ROU - CAT.: A - ACRYLIC



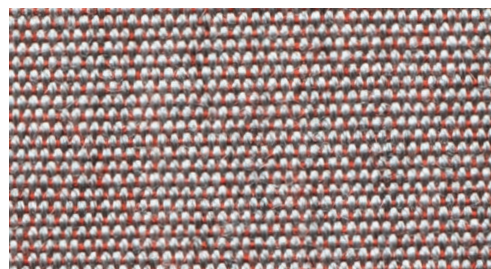
ECRU
REF: ...EU - CAT.: A - ACRYLIC



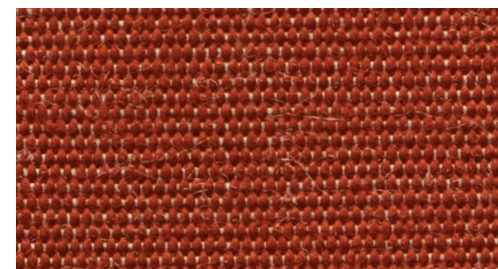
NAVY BLUE
REF: ...NBU - CAT.: A - ACRYLIC



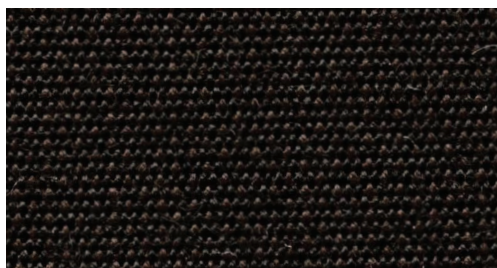
ROSE
REF: ...RO - CAT.: A - ACRYLIC



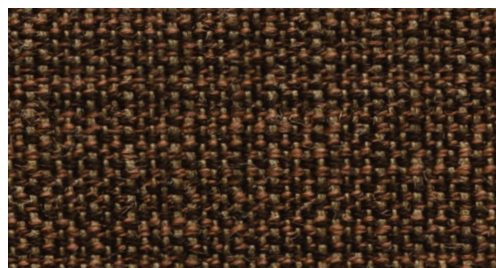
TERRA
REF: ...TER - CAT.: A - ACRYLIC



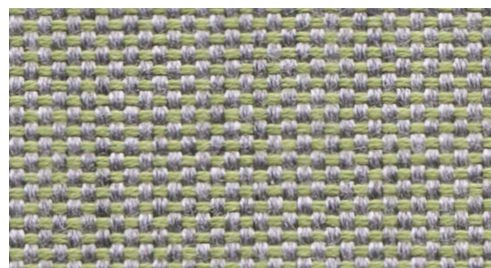
BLACK
REF: ...ZU - CAT.: A - ACRYLIC



CHOCOLAT LINEN
REF: ...CHL - CAT.: A - ACRYLIC



SAGE LINEN
REF: ...SL - CAT.: A - ACRYLIC



FROST LINEN
REF: ...FL - CAT.: A - ACRYLIC



CATEGORY B FABRICS ACRYLIC & POLYPROPYLENE

WHITE HEAVY
REF: ...WAH - CAT.: B - POLYPROPYLENE



LIGHT BLUE HEAVY
REF: ...LBH - CAT.: B - POLYPROPYLENE



AZURE BLUE HEAVY
REF: ...AZH - CAT.: B - POLYPROPYLENE



ROCK HEAVY
REF: ...ROH - CAT.: B - POLYPROPYLENE



SAND HEAVY
REF: ...SAH - CAT.: B - POLYPROPYLENE



SAFFRON HEAVY
REF: ...SFH - CAT.: B - POLYPROPYLENE



RED WINE HEAVY
REF: ...RWH - CAT.: B - POLYPROPYLENE



CARMINE HEAVY
REF: ...CH - CAT.: B - POLYPROPYLENE



MOSS HEAVY
REF: ...MH - CAT.: B - POLYPROPYLENE



CARAMEL HEAVY
REF: ...CAH - CAT.: B - POLYPROPYLENE



AUBERGINE HEAVY
REF: ...AUH - CAT.: B - POLYPROPYLENE



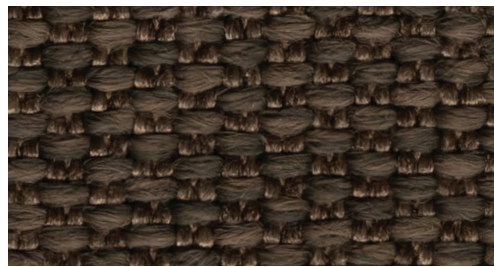
GRANITE HEAVY
REF: ...GRH - CAT.: B - POLYPROPYLENE



PITCH BLACK HEAVY
REF: ...ZUPH - CAT.: B - POLYPROPYLENE



DARK BROWN TWIN
REF: ...DBT - CAT.: B - POLYPROPYLENE



WHITE TWIN
REF: ...WUT - CAT.: B - POLYPROPYLENE



CATEGORY B FABRICS ACRYLIC & POLYPROPYLENE

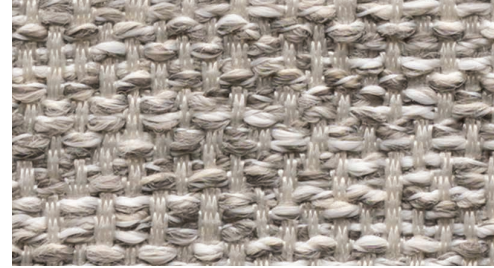
NATURAL WHITE DOT
REF: ...NWD - CAT.: B - POLYPROPYLENE



NATURAL GREY DOT
REF: ...NGD - CAT.: B - POLYPROPYLENE



NATURAL SILVER DOT
REF: ...NSD - CAT.: B - POLYPROPYLENE



NATURAL ECRU DOT
REF: ...NED - CAT.: B - POLYPROPYLENE



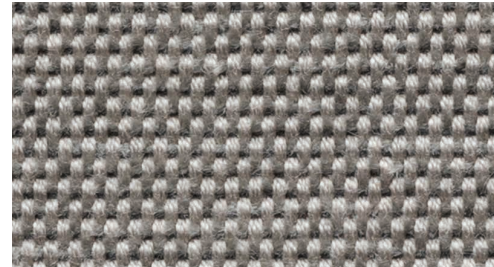
NATURAL LINEN DOT
REF: ...NLD - CAT.: B - POLYPROPYLENE



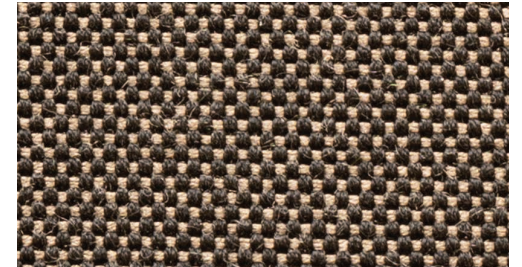
STONE FLAX
REF: ...SF - CAT.: B - ACRYLIC



DESERT STONE FLAX
REF: ...DSF - CAT.: B - ACRYLIC

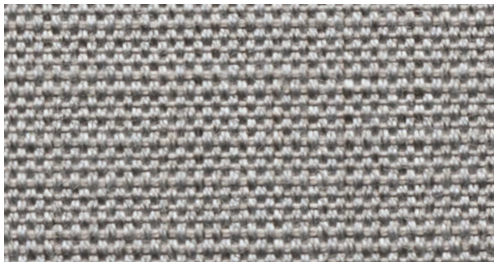


MARBLE FLAX
REF: ...MAF - CAT.: B - ACRYLIC



CATEGORY B/C LAMINATED FABRICS ACRYLIC

FROST LINEN LAMINATED
REF: ...FLL - CAT.: B - ACRYLIC



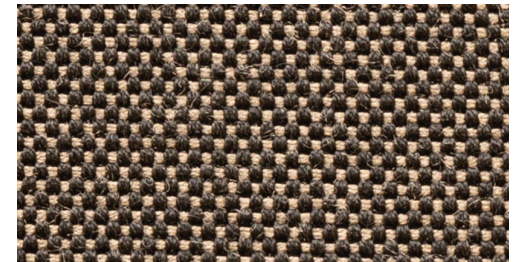
TUXEDO LINEN LAMINATED
REF: ...TULL - CAT.: B - ACRYLIC



DESERT STONE FLAX LAMINATED
REF: ...DSFL - CAT.: C - ACRYLIC



MARBLE FLAX LAMINATED
REF: ...MAFL - CAT.: C - ACRYLIC

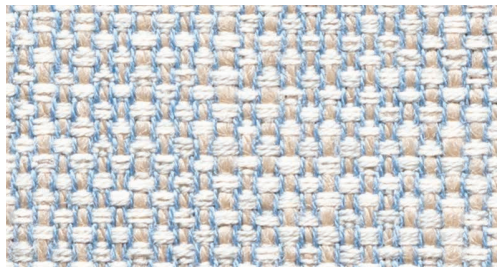


CATEGORY C FABRICS ACRYLIC & POLYPROPYLENE

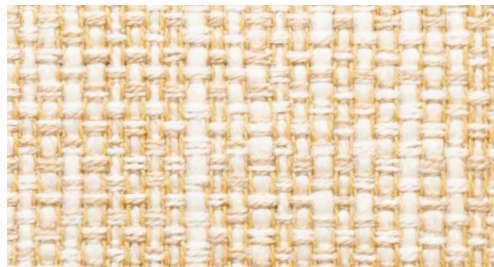
PASTEL SAND
REF: ...PAS - CAT.: C - ACRYLIC



PASTEL BLUE
REF: ...PAB - CAT.: C - ACRYLIC



PASTEL YELLOW
REF: ...PAY - CAT.: C - ACRYLIC



PASTEL COCONUT
REF: ...PAC - CAT.: C - ACRYLIC



PASTEL GREEN
REF: ...PAG - CAT.: C - ACRYLIC



PASTEL ORANGE
REF: ...PAO - CAT.: C - ACRYLIC



PASTEL RED
REF: ...PAR - CAT.: C - ACRYLIC



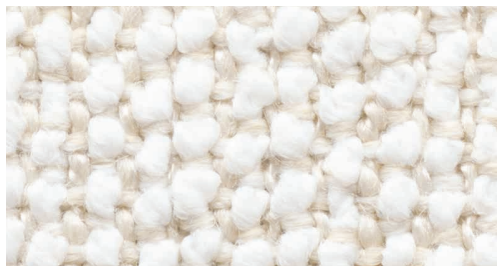
MOSS
REF: ...MOS - CAT.: C - POLYPROPYLENE



BOUCLE SAND
REF: ...BOS - CAT.: C - POLYPROPYLENE



BOUCLE WHITE
REF: ...BOW - CAT.: C - POLYPROPYLENE



BOUCLE GREY
REF: ...BOG - CAT.: C - POLYPROPYLENE



BOUCLE BLUE
REF: ...BOB - CAT.: C - POLYPROPYLENE



ECRU LINEN
REF: ...EUL - CAT.: C - ACRYLIC



JUNIPER GREEN
REF: ...JG - CAT.: C - ACRYLIC



AUBERGINE MESH
REF: ...AUM - CAT.: C - ACRYLIC



NIGHT BLUE
REF: ...NB - CAT.: C - ACRYLIC



CATEGORY C FABRICS ACRYLIC & POLYPROPYLENE

VANILLE VELVET
REF: ...VAV - CAT.: C - ACRYLIC



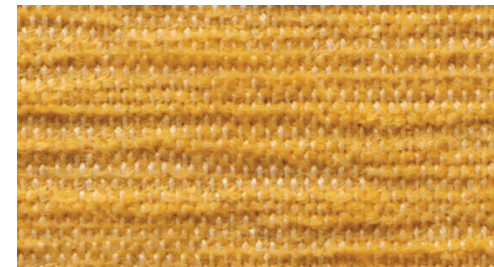
ECRU VELVET
REF: ...EUV - CAT.: C - ACRYLIC



SALMON VELVET
REF: ...SAV - CAT.: C - ACRYLIC



SAFFRON VELVET
REF: ...SFV - CAT.: C - ACRYLIC



DARK BROWN VELVET
REF: ...DBV - CAT.: C - ACRYLIC



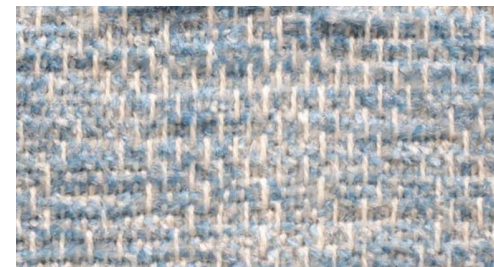
TERRA VELVET
REF: ...TEV - CAT.: C - ACRYLIC



AUBERGINE VELVET
REF: ...AUV - CAT.: C - ACRYLIC



ICE BLUE VELVET
REF: ...IBV - CAT.: C - ACRYLIC



SILVER VELVET
REF: ...SIV - CAT.: C - ACRYLIC



IRON GREY VELVET
REF: ...IGV - CAT.: C - ACRYLIC



ORANGE CHEVRON
REF: ...ORC - CAT.: C - POLYPROPYLENE



OLD ROSE
REF: ...OLR - CAT.: C - POLYPROPYLENE



LIGHT BOUCLE WHITE
REF: ...LBW - CAT.: C - POLYPROPYLENE



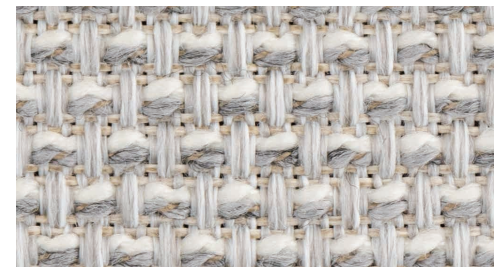
LIGHT BOUCLE SAND
REF: ...LBS - CAT.: C - ACRYLIC



LIGHT BOUCLE GREY
REF: ...LBG - CAT.: C - POLYPROPYLENE



GREY MESH
REF: ...GM - CAT.: C - ACRYLIC

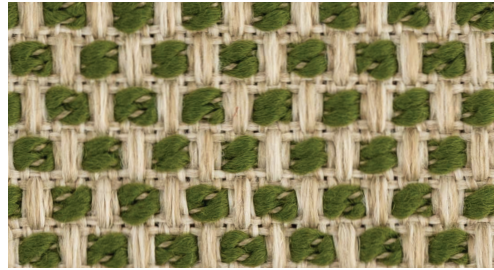


CATEGORY C FABRICS ACRYLIC & POLYPROPYLENE

CAMEL MESH
REF: ...CM - CAT.: C - POLYPROPYLENE



MOSS MESH
REF: ...MM - CAT.: C - POLYPROPYLENE



SAND MESH
REF: ...SM - CAT.: C - POLYPROPYLENE



CATEGORY C FABRICS POLYSKIN

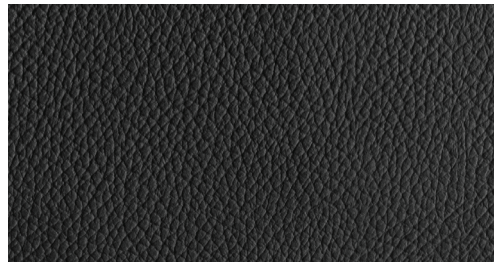
ONLY AVAILABLE FOR STRAPPY, STYLETTO & OSTREA COLLECTION!

POLYSKIN IS A SYNTHETIC ALL WEATHER LEATHER IMITATION THAT IS EXTREMELY UV AND WATER RESISTANT.

CAPPUCCINO
REF: ...SCA - CAT.: C - POLYSKIN



BLACK
REF: ...SBL - CAT.: C - POLYSKIN



COGNAC
REF: ...SCO - CAT.: C - POLYSKIN



BATYLINE

THE SLINGS ON METAL FRAMED CHAIRS AND LOUNGERS ARE MADE OF BATYLINE® FABRICS, A WOVEN POLYESTER FIBER PROTECTED BY A PVC COATING. THIS COATING GUARANTEES EXCEPTIONAL RESISTANCE TO CLIMATIC CONDITIONS AND UV EXPOSURE. THE FACT THAT THERE IS NO MOISTURE ABSORPTION RESULTS IN QUICK-DRYING, LITTLE SENSITIVITY TO STAINING AND EASY CLEANING.

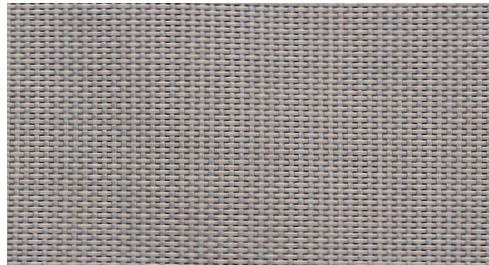
WHITE
REF: ...WU



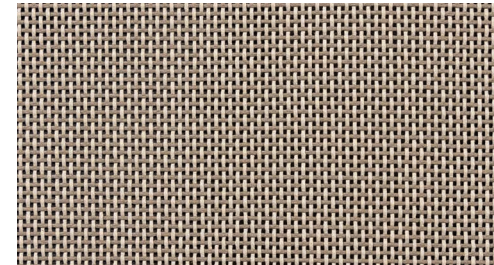
WHITE (FOR NNX(L) - OZN - WV)
REF: ...WUC



PEARL GREY
REF: ...PG



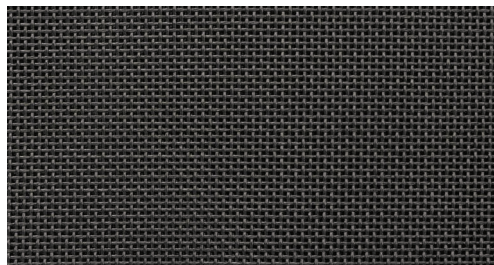
CAPPUCCINO
REF: ...CAU



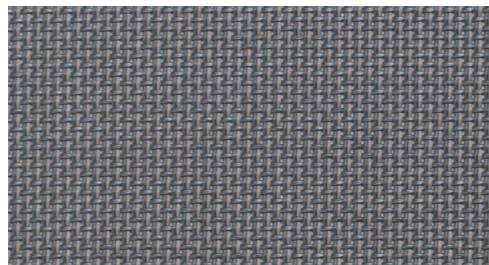
BLACK
REF: ...ZU



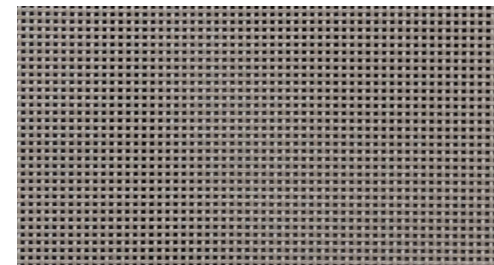
BLACK (FOR NNX(L) - OZN - WV)
REF: ...ZUC



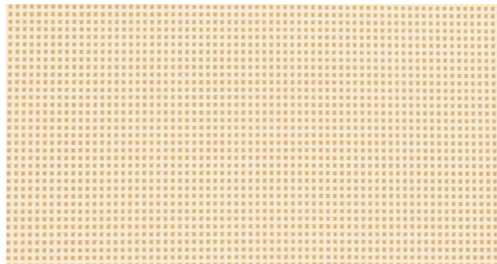
GRAPHITE
REF: ...GRP



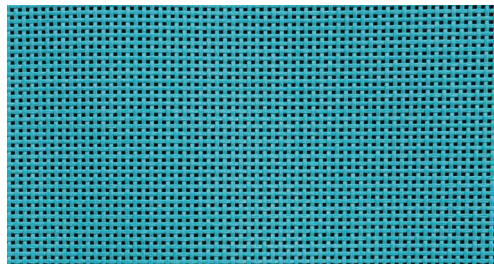
BROWN
REF: ...BRU



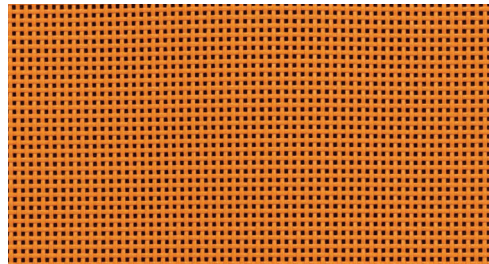
ECRU
REF: ...EU



TURQUOISE
REF: ...TQF



ORANGE
REF: ...ORU



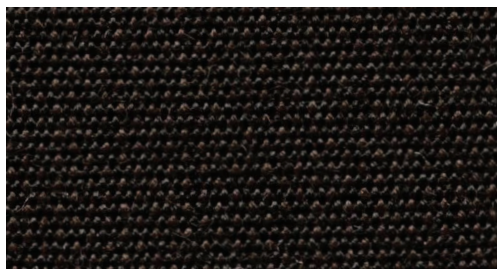
PARASOL FABRICS

FOR OUR SHADY AND BLOOM PARASOL WE USE A THICKER FABRIC WITH A SPECIAL COATING TO FURTHER PROTECT THEM FROM THE ELEMENTS.

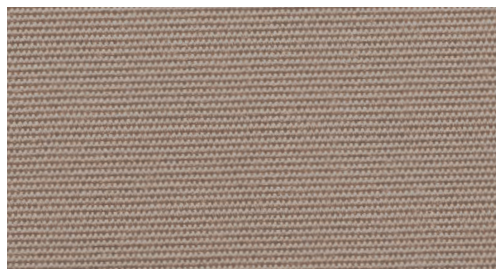
WHITE
REF: ...WU - CAT.: A - ACRYLIC



BLACK
REF: ...ZU - CAT.: A - ACRYLIC



CAPPUCCINO
REF: ...CAU - CAT.: A - ACRYLIC



ECRU
REF: ...EU - CAT.: A - ACRYLIC



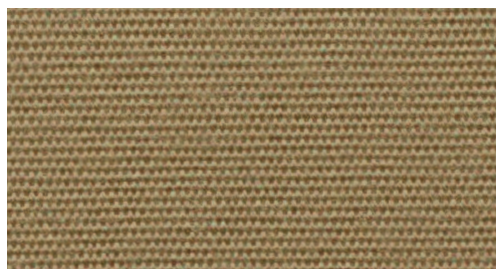
BLUE
REF: ...BU - CAT.: C - ACRYLIC



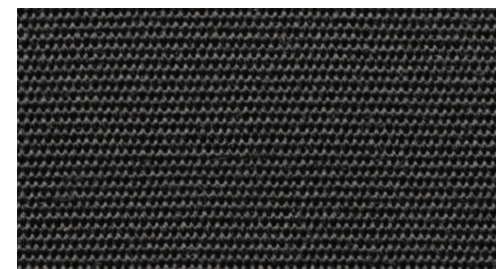
FONDANT
REF: ...FOU - CAT.: A - ACRYLIC



MOKKA
REF: ...MU - CAT.: A - ACRYLIC



ROCK
REF: ...ROU - CAT.: A - ACRYLIC



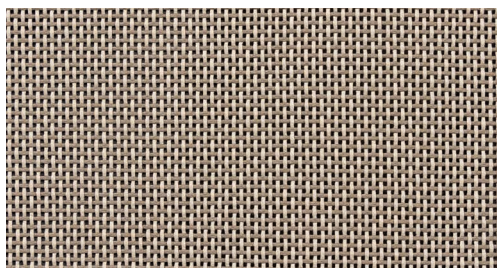
PARASOL BATYLINE

THE BATYLINE FOR OUR OAZZ IS WOVEN TIGHT AND GIVEN A COATING TO FURTHER PROTECT THEM FROM THE ELEMENTS.

WHITE
REF: ...WU



CAPPUCCINO
REF: ...CAU



BLACK
REF: ...ZU

